

White Guy on the Bus

By Bruce Graham

UF School of Theatre and Dance

Directed by Malcolm Gets

Sound Design by Jesse Desrosiers

Asst. Sound Designer: Dylan Probert

Speaker Plot

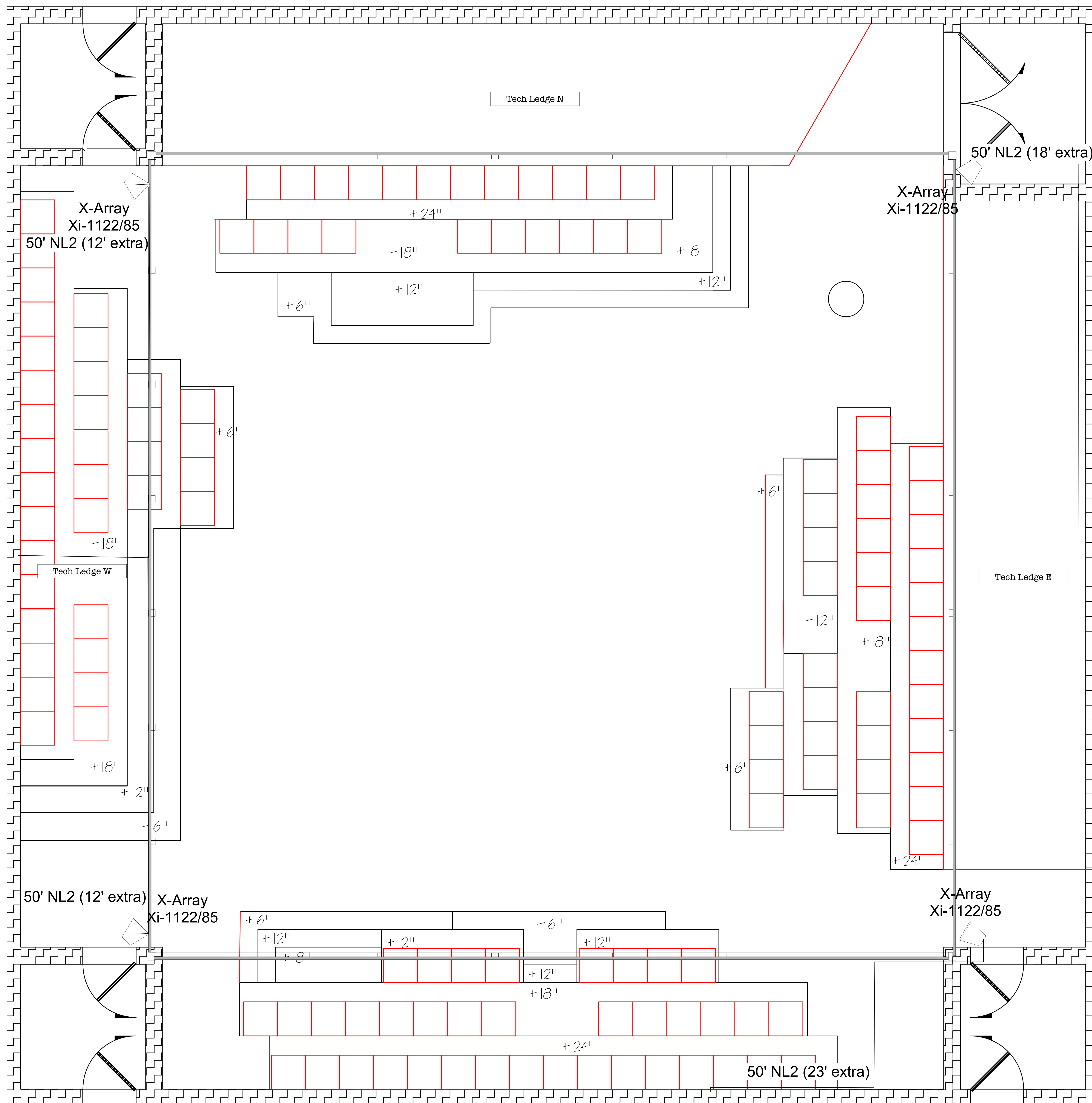
Ground Level

*Danley speakers are 6" in every dimension

*Danley speakers on Ground Level are placed under seating risers with a plastic mesh in front of them to allow sound to escape

*The Danley speaker hung from the grid is hung from a pipe directly under the catwalk

*Cable lengths include vertical distances, such as wrapping around doors



White Guy on the Bus

By Bruce Graham

UF School of Theatre and Dance

Directed by Malcolm Gets

Sound Design by Jesse Desrosiers

Asst. Sound Designer: Dylan Probert

Speaker Plot

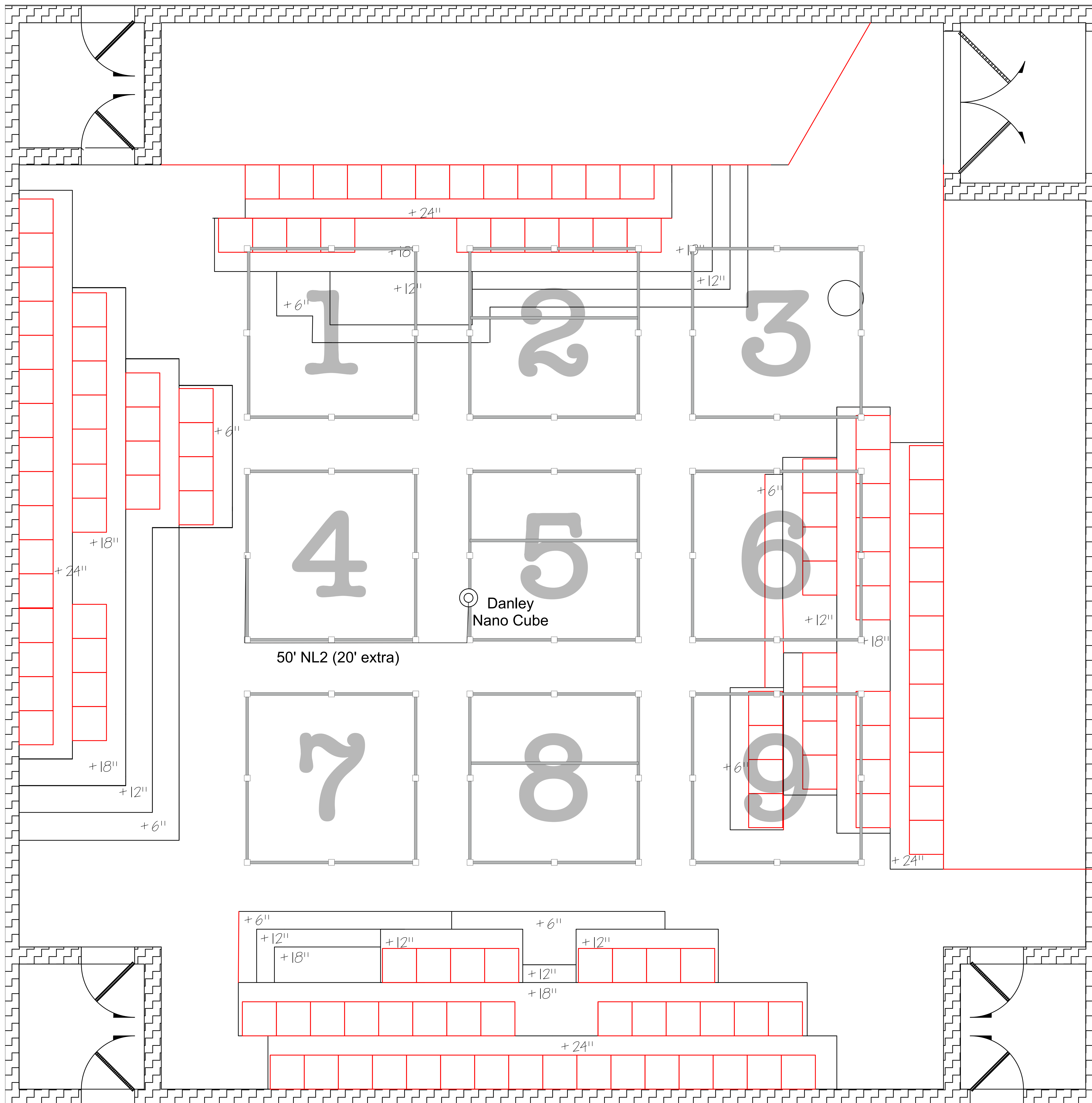
	Tech Ledge
--	------------

*Danley speakers are 6" in every dimension

*Danley speakers on Ground Level are placed under seating risers with a plastic mesh in front of them to allow sound to escape

*The Danley speaker hung from the grid is hung from a pipe directly under the catwalk

*Cable lengths include vertical distances, such as wrapping around doors



White Guy on the Bus

By Bruce Graham

UF School of Theatre and Dance

Directed by Malcolm Gets

Sound Design by Jesse Desrosiers

Asst. Sound Designer: Dylan Probert

Speaker Plot

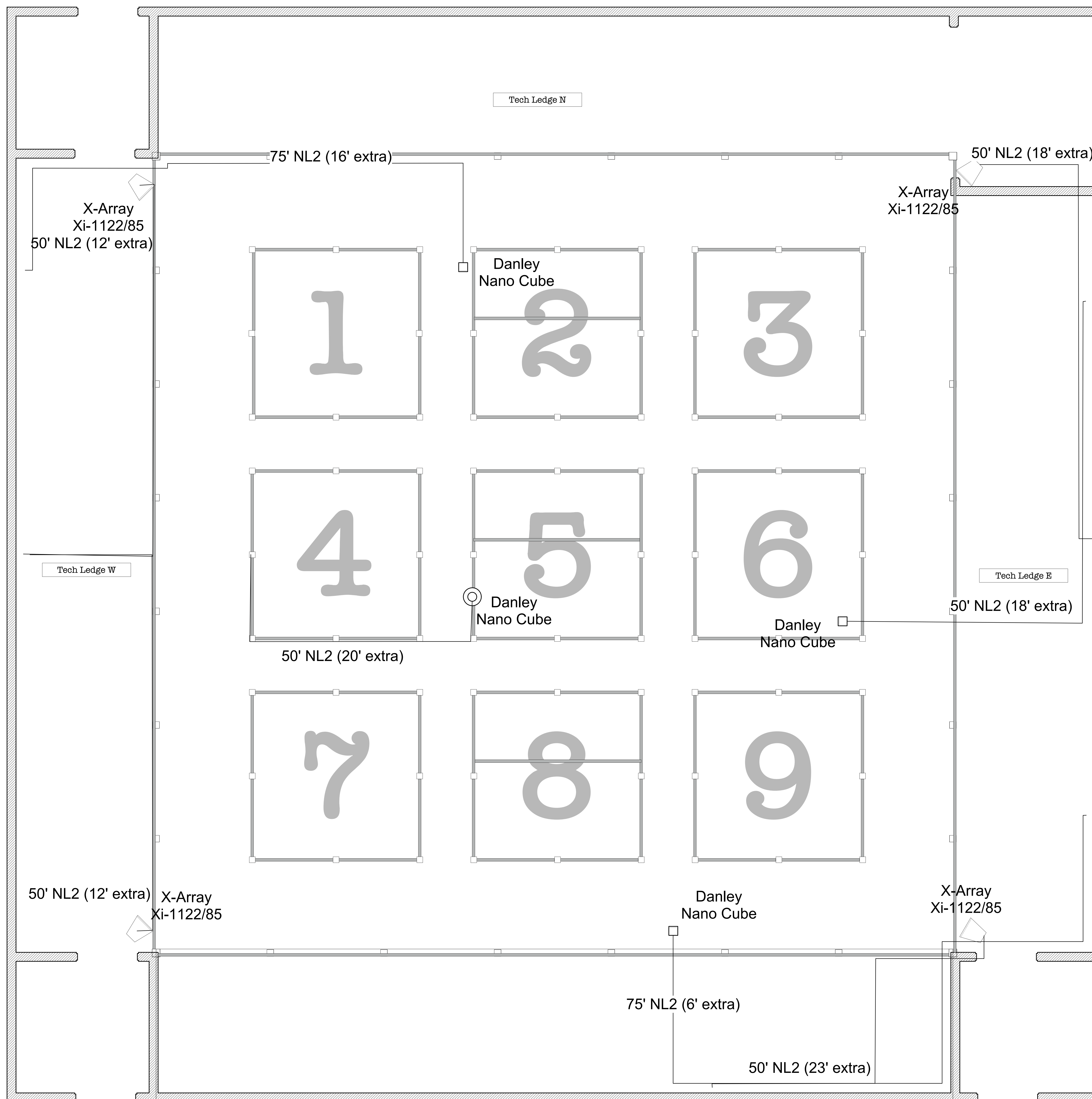
Grid

*Danley speakers are 6" in every dimension

*Danley speakers on Ground Level are placed under seating risers with a plastic mesh in front of them to allow sound to escape

*The Danley speaker hung from the grid is hung from a pipe directly under the catwalk

*Cable lengths include vertical distances, such as wrapping around doors



White Guy on the Bus

By Bruce Graham

UF School of Theatre and Dance

Directed by Malcolm Gets

Sound Design by Jesse Desrosiers

Asst. Sound Designer: Dylan Probert

Speaker Plot

Ground Level	Tech Ledge	Grid
--------------	------------	------

*Danley speakers are 6" in every dimension

*Danley speakers on Ground Level are placed under seating risers with a plastic mesh in front of them to allow sound to escape

*The Danley speaker hung from the grid is hung from a pipe directly under the catwalk

*Cable lengths include vertical distances, such as wrapping around doors